

# Einführung in die Humanökologie

Univ.Prof.Dr.Harald Wilfing

VO 2 SSW – 3 ECTS

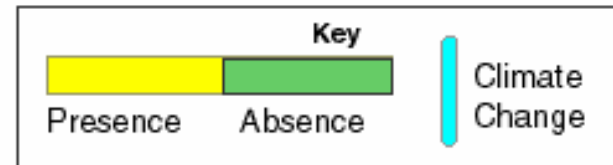
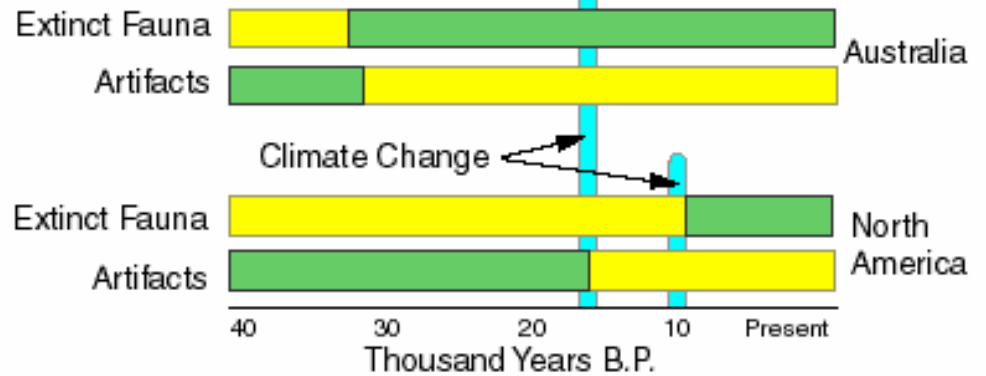
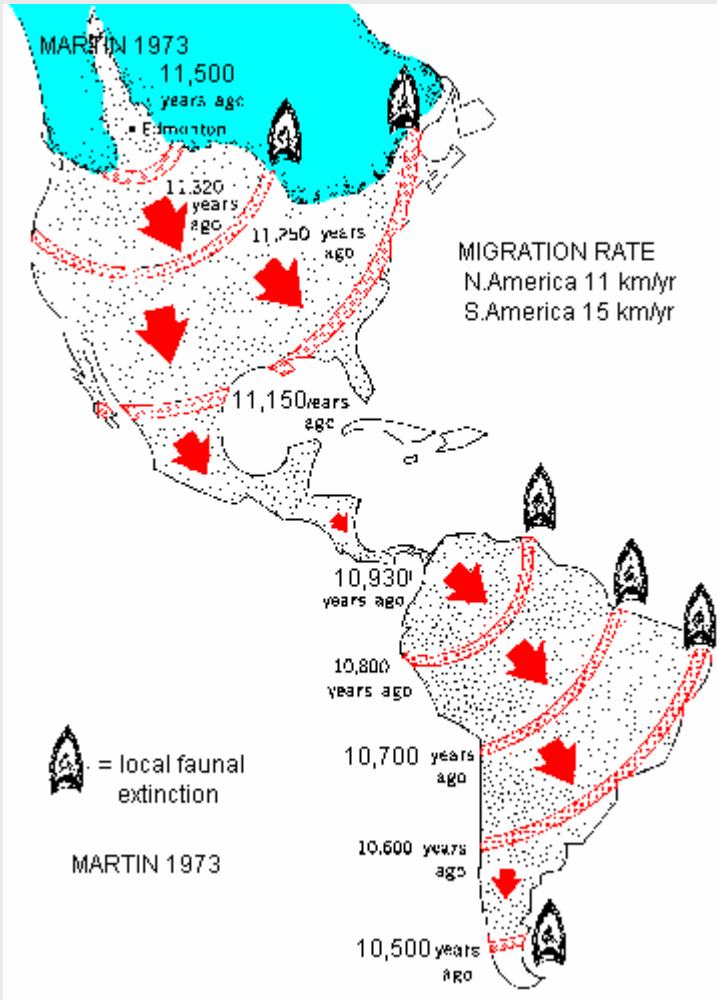
*[www.humanecology.at/teaching](http://www.humanecology.at/teaching)*

## Subsistence Modes

Correlations between human ecosystem interference and mode of subsistence:

State of the ecosystem	Extent of manipulation	Type of resource	Modes of production
Pristine	Little	Not domesticated	<b>Hunter/gatherer/fisher</b>
Partly modified	Regular	Partially domesticated	Horticulture, Slash and-burn agriculture, Basic animal husbandry
Largely artificial	Only stable by human intervention	Almost entirely domesticated	Agriculture, Pastoralism, Industrialism

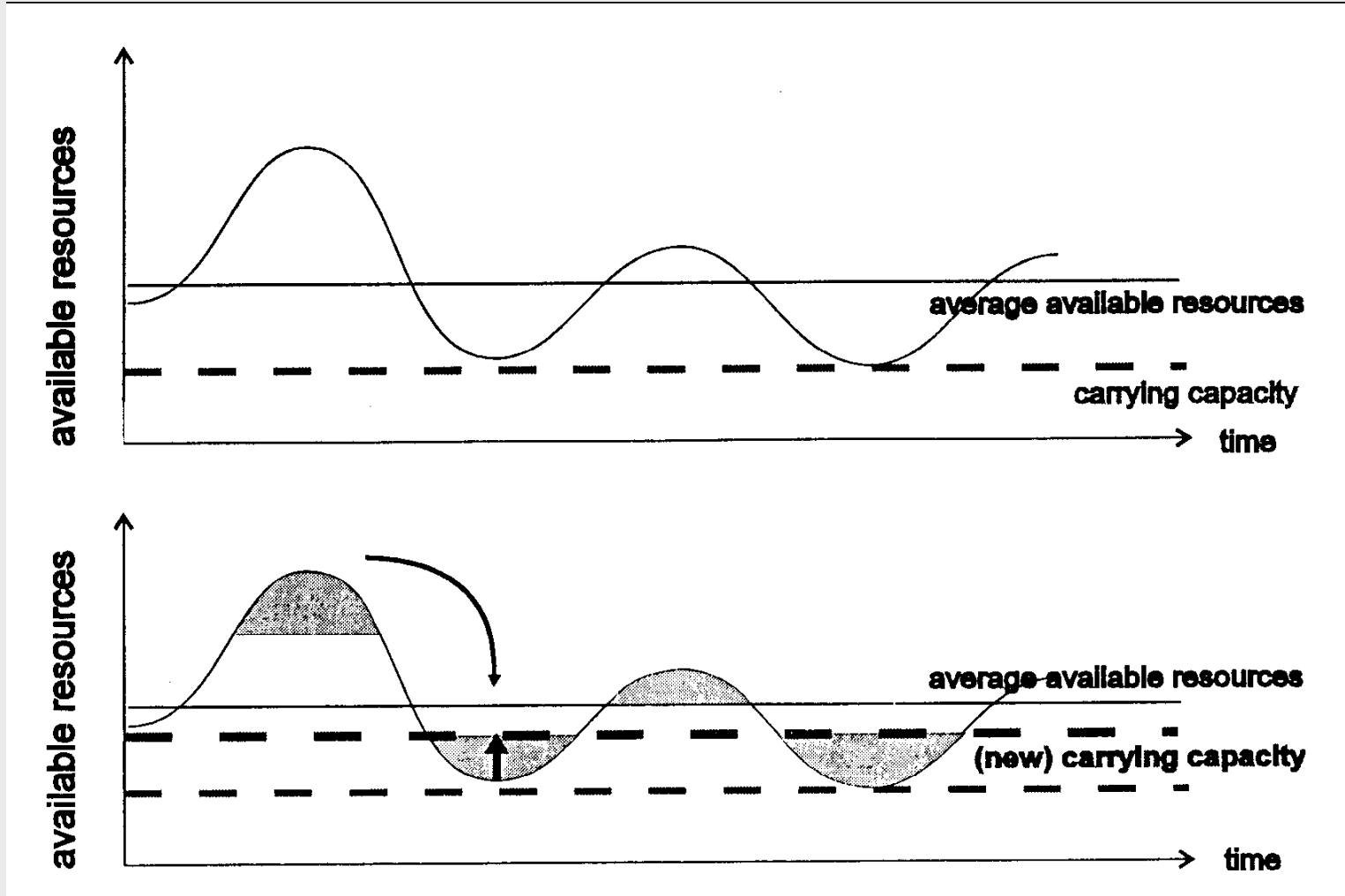
# „Great Extinction“



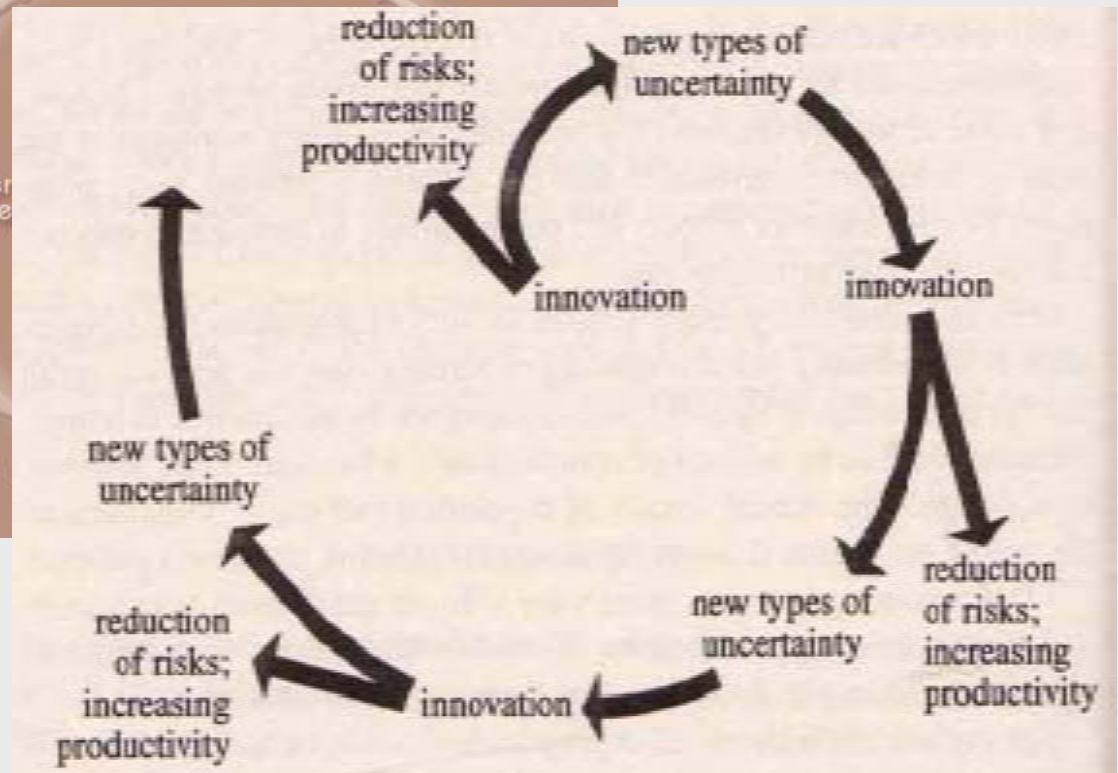
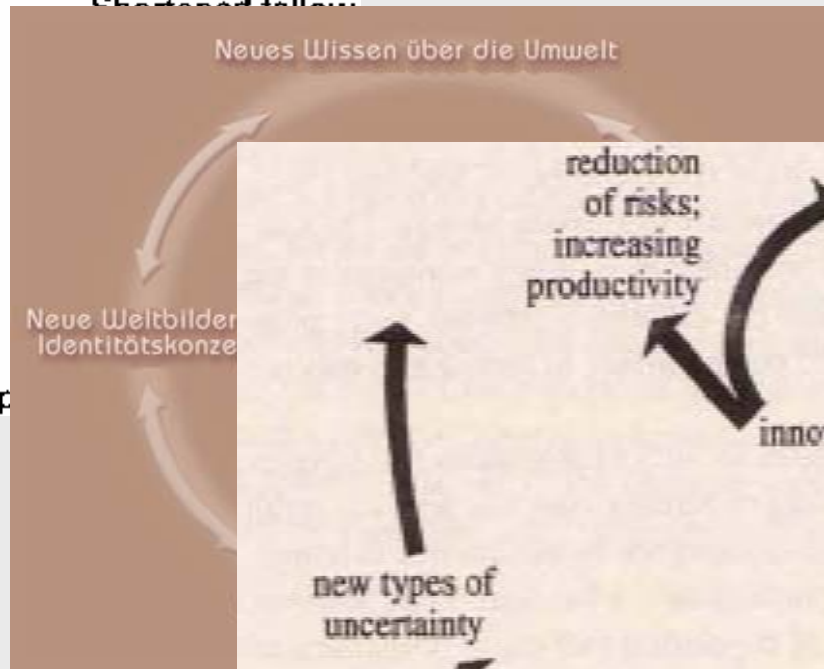
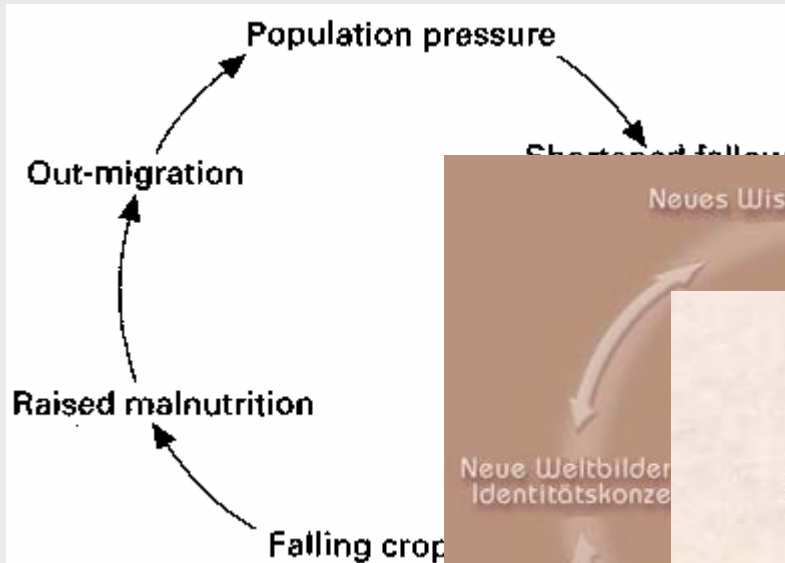
## „Alte Welt“



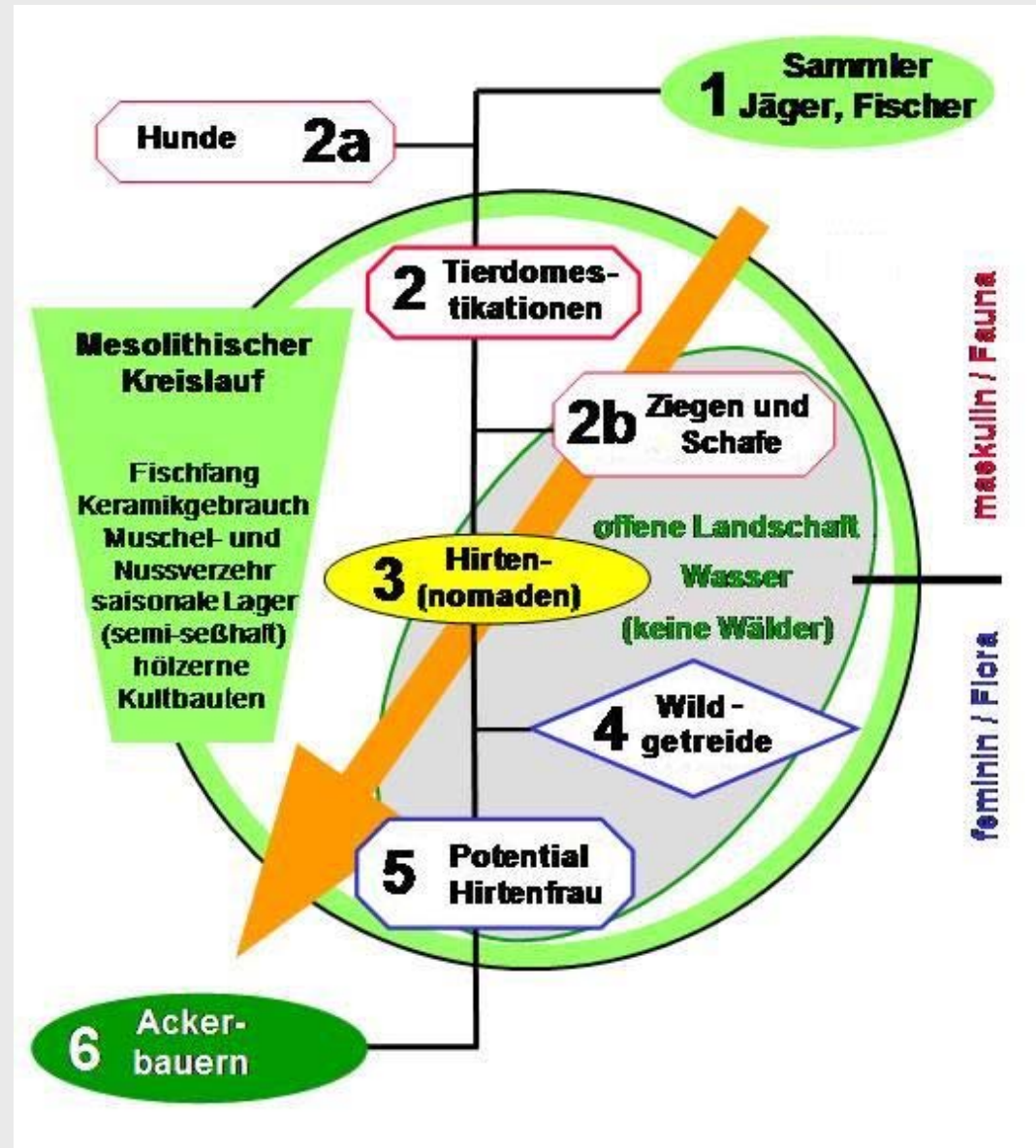
## Carrying capacity



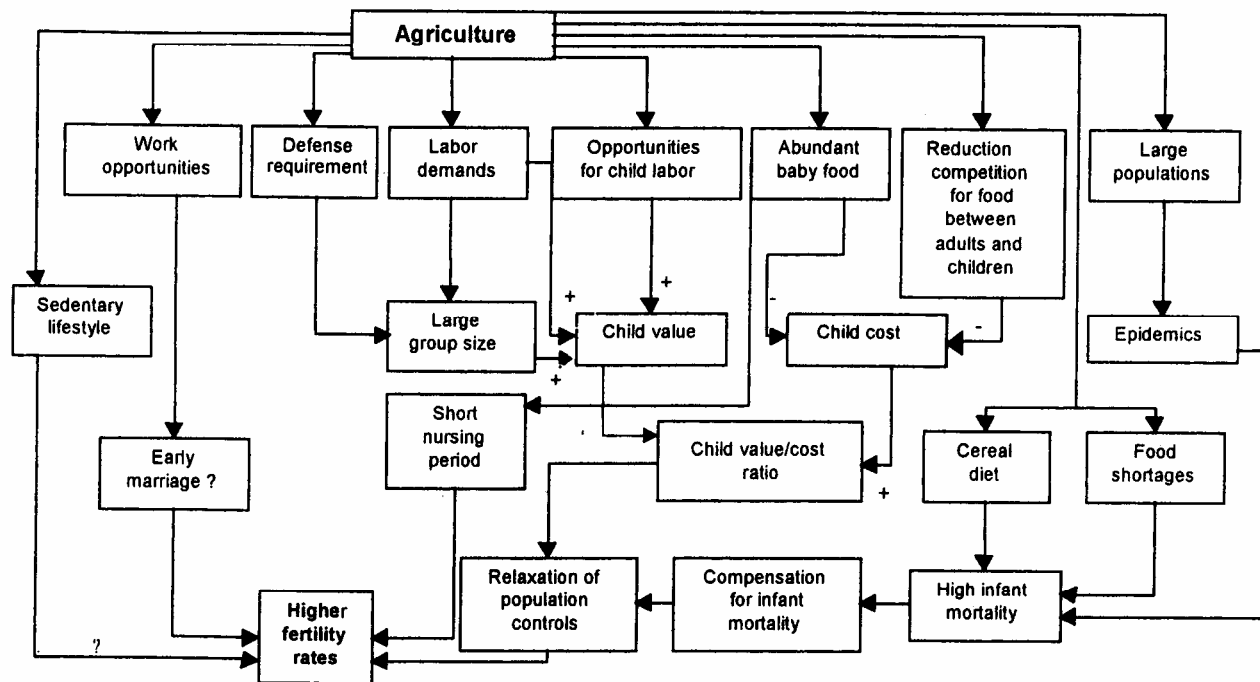
## Circular processes



# „Neolithic Transition“ - 1



## „Neolithic Transition“ - 2



*Figure 11: A model of the impact of agriculture on the determinants of fertility (Hassan 1981: 228).*



## „Neolithic Transition“ - 3

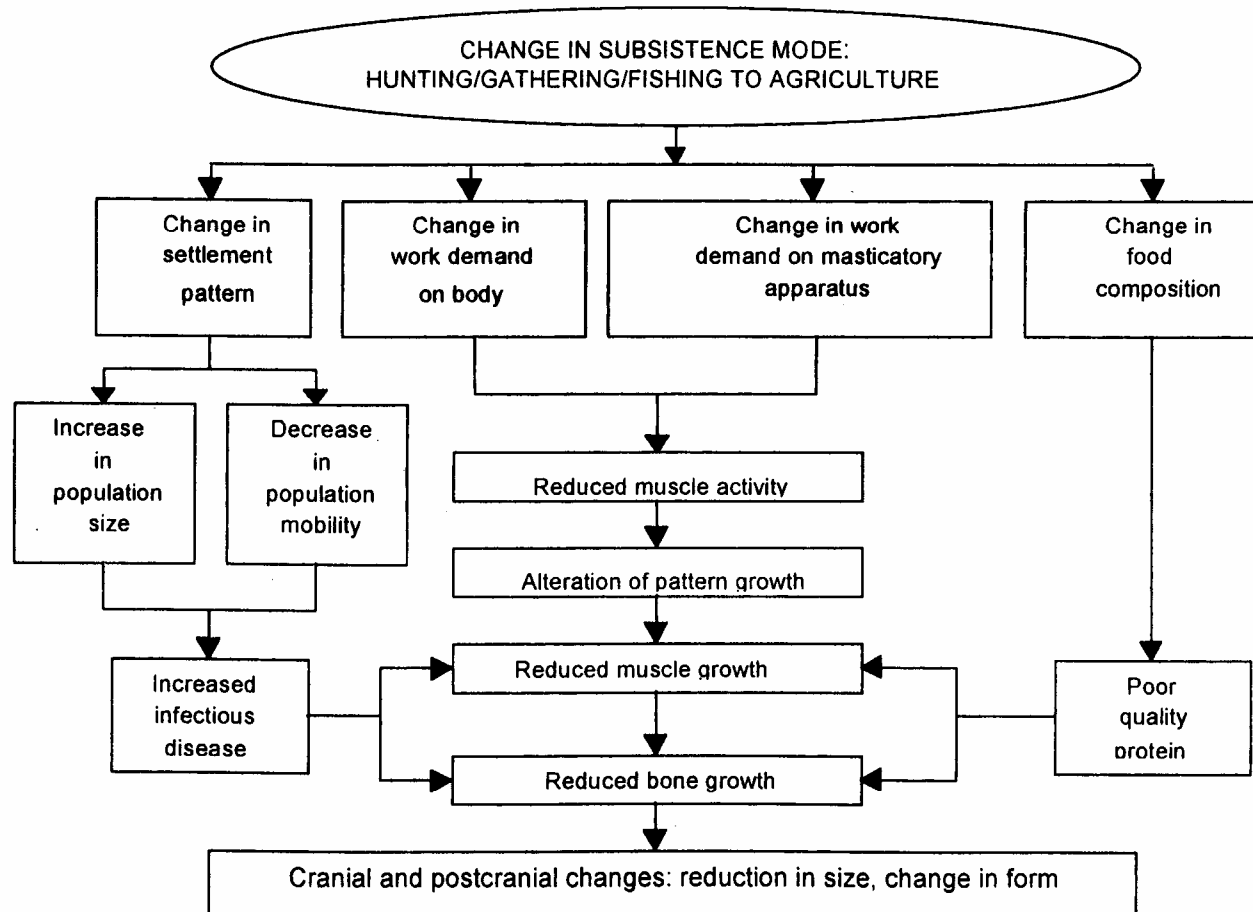


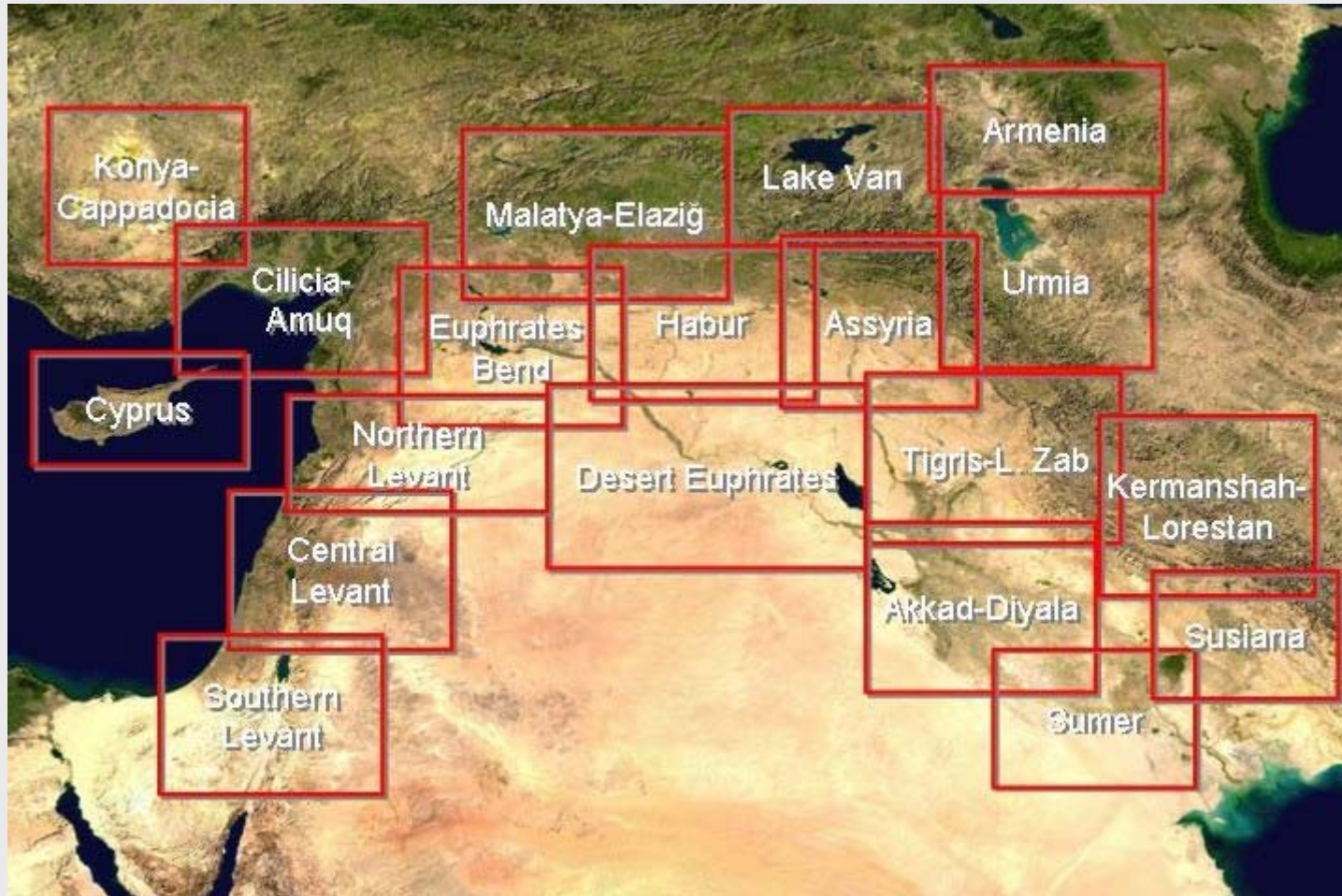
Figure 13: Processual model of biocultural adaptation on the prehistoric Georgia coast (Larsen 1987, 1995).

## Subsistence Modes

Correlations between human ecosystem interference and mode of subsistence:

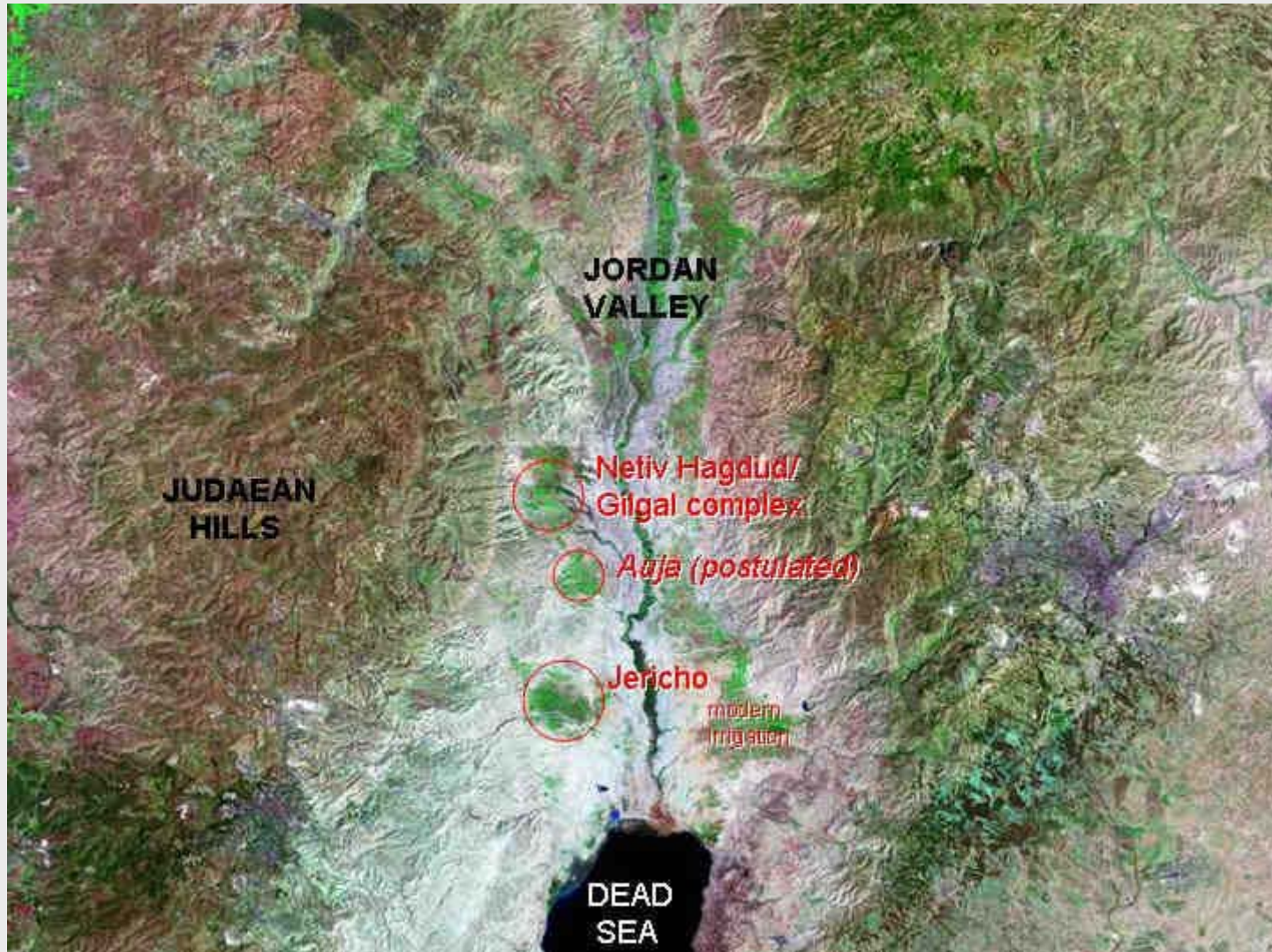
State of the ecosystem	Extent of manipulation	Type of resource	Modes of production
Pristine	Little	Not domesticated	Hunter/gatherer/fisher
Partly modified	Regular	Partially domesticated	Horticulture, Slash and-burn agriculture, Basic animal husbandry
Largely artificial	Only stable by human intervention	Almost entirely domesticated	Agriculture, Pastoralism, Industrialism

## „Fruchtbarer Halbmond“ - 1

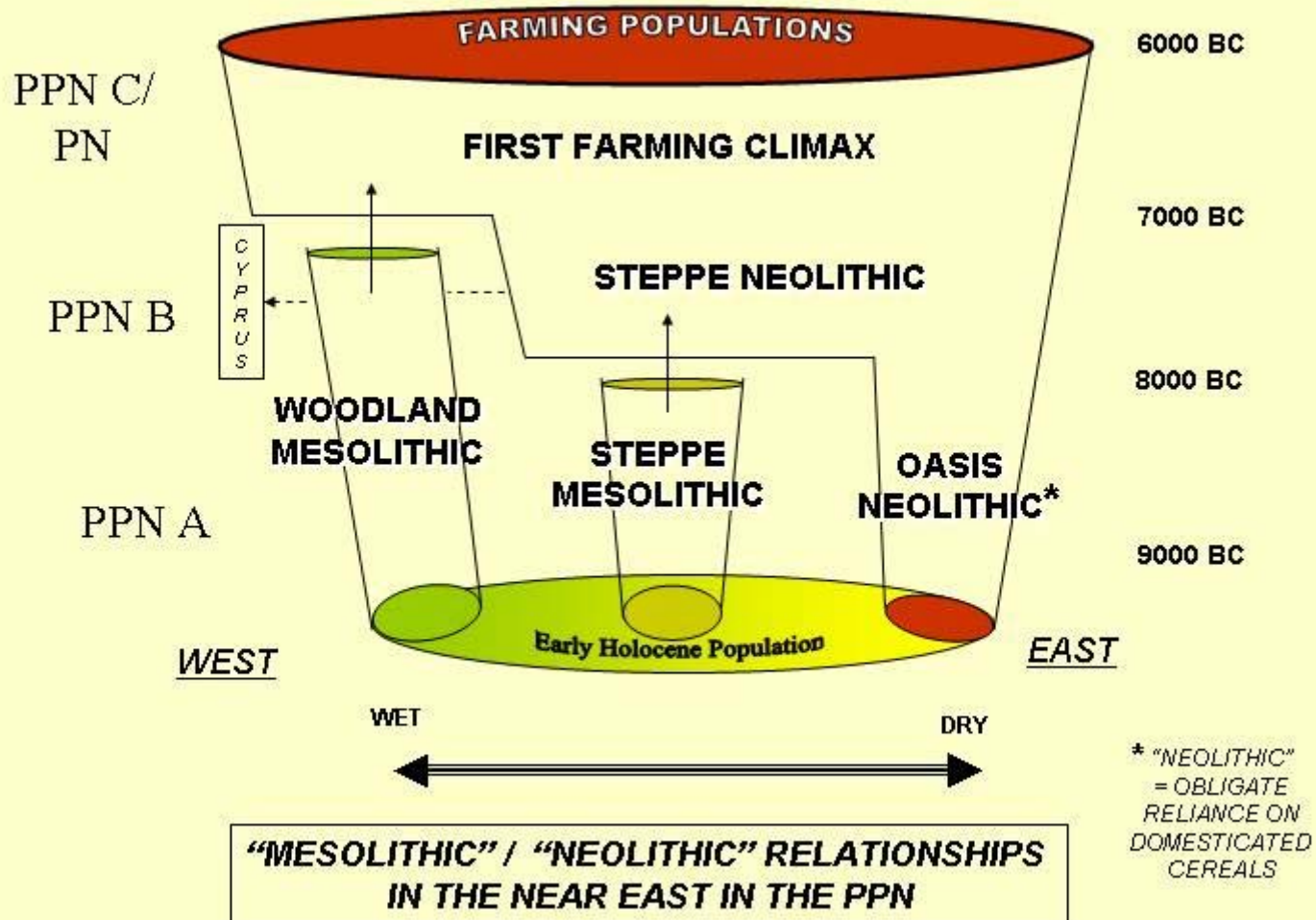


<http://www.archatlas.dept.shef.ac.uk/OriginsFarming/Farming.php>

## „Fruchtbarer Halbmond“ - 2



## „Fruchtbarer Halbmond“ - 3



## „Überoptimale“ Habitats

